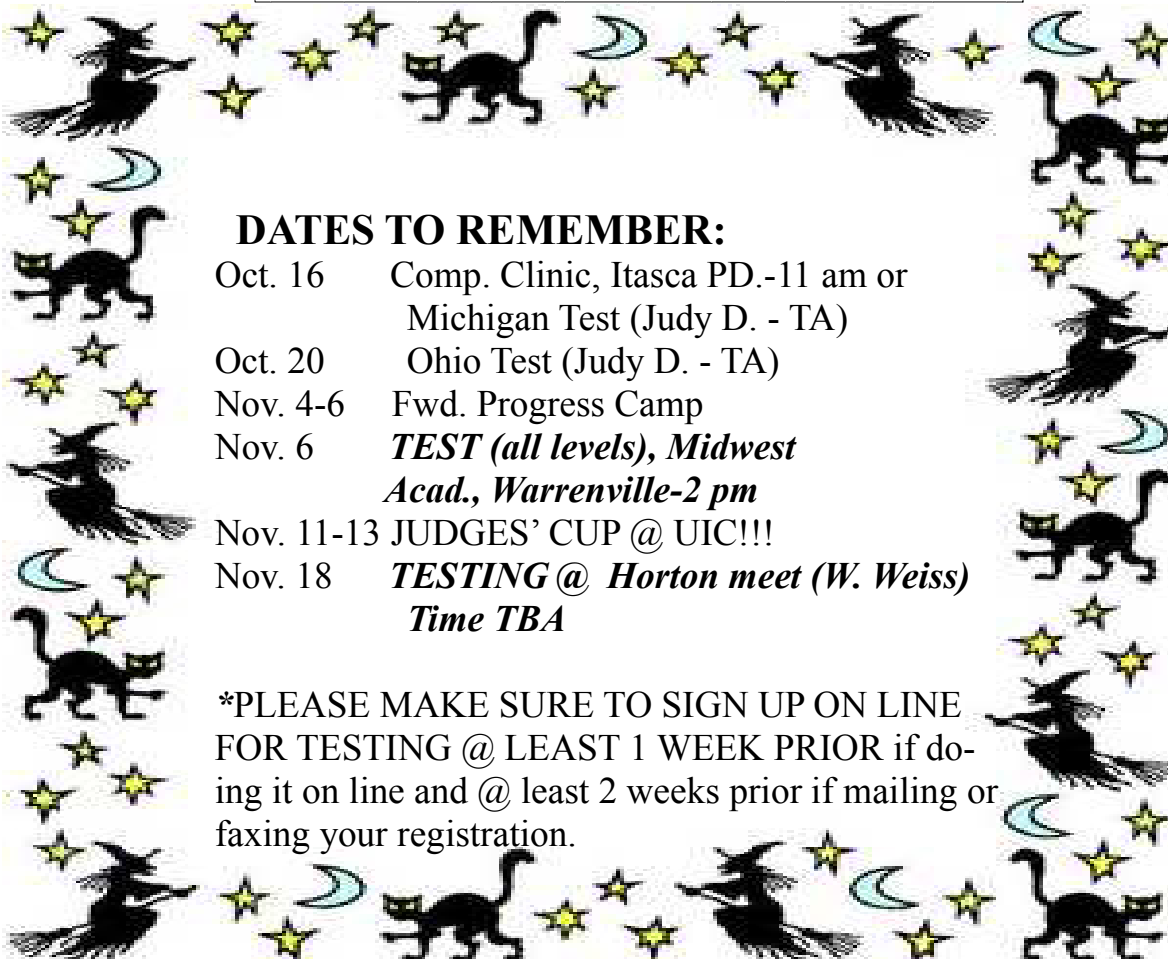


Illinois NAWGJ October, 2005

Judges Mileage Reimbursement - Effective immediately, mileage is \$.48/mile until Dec. 31, 2005. IRS usually announces in Dec. the mileage reimbursement that will be effective Jan. 1 for the following year.



DATES TO REMEMBER:

- Oct. 16 Comp. Clinic, Itasca PD.-11 am or Michigan Test (Judy D. - TA)
- Oct. 20 Ohio Test (Judy D. - TA)
- Nov. 4-6 Fwd. Progress Camp
- Nov. 6 **TEST (all levels), Midwest Acad., Warrenville-2 pm**
- Nov. 11-13 **JUDGES' CUP @ UIC!!!**
- Nov. 18 **TESTING @ Horton meet (W. Weiss) Time TBA**

*PLEASE MAKE SURE TO SIGN UP ON LINE FOR TESTING @ LEAST 1 WEEK PRIOR if doing it on line and @ least 2 weeks prior if mailing or faxing your registration.

IL-NAWGJ BOARD

Jeanne Johnson—State Judging Dir.
708-246-1643
ILSJD04@sbcglobal.net

Sandy Oldham—Admin. Asst./
Active Status Coordinator
847-961-6476
Sewoldh@aol.com

Cyndi Zimmerman—Treasurer
630-355-1779
Gymmom4@aol.com

Mary Kraus—South Assigner
217-899-7818
Mjk1037s@sbcglobal.net

Mary Lou Ackman—North Assigner
630-497-0586
mlouackman@yahoo.com

Betty Axelson-McClelland-
N. Judges Cup
847-382-7487
Eggsgymbetty@aol.com

Cathy Peebles—S. Judges Cup
217-787-5451
cathypeebles@insightbb.com

Kathie Gebhardt—Education
815-578-4113
Gymjudge59@aol.com

Debbie Pulley—Newsletter
309-691-8603
pr1celess@insightbb.com

WEBSITE: ilnawgj.com

Hilary Carlson-Test Admin.
630-351-9704
hilarycarlson@comcast.net

Practice tests for L5/6-7/8-9 & 10 are now updated on the NAWGJ-IL website. Also, info. about becoming a judge is available.



Thanks to my husband, Frank, my computer is now up and running!



New rules and policies books available on the USAG website. Go to programs (click) then go to women's (click) then go to "Online request form" at the top of the page—fill out and email or snail mail it back—It takes 3-4 weeks to receive your new book.

WHY THE "STATE" JUDGES' CUP WILL BE BETTER THAN EVER THIS YEAR

- *The South judges are coming up to corrupt the North judges!
- *The South judges will impress everyone with their theme baskets for the auction! North judges – if you need ideas, ask Linda Lowe, our Basket Coordinator! (lklowe@netscape.net)
- *We have some new vendors, so you can shop 'til you drop on our breaks! Christmas is right around the corner!
- *We'll all catch up on gossip from all over the state instead of just north or south scoops! This is one position we haven't filled, so if anyone would like to chair this committee, send your application to Sandy Oldham!
- *Gourmet dining with recipes from Betty A.M. Crocker's specialties! (anyone want carry-out??)
- *We'll have a special birthday celebration for one of our spring chickens who turned 29 recently. She's been 29 for several years, so her math skills need a little work!
- **And BEST OF ALL, the SOMA Institute for Massage is coming back! (They make judging this meet worth it!!!!)

But the main reason this meet will be better than ever is that we have so many judges coming and that should make it a terrific experience for all the gymnasts! We could use a few more judges on Fri.- we hope to have afternoon and evening sessions if we have the numbers, so if anyone hasn't signed up yet with Mary Lou Ackman, please contact her ASAP!!

HOSPITALITY

THANK YOU, NORTH JUDGES, IN ADVANCE FOR YOUR HELP WITH THIS! We will need pop, water, snacks, etc. and a sign-up for these items will be coming out shortly. We plan to use the Training Camp at Midwest on Nov. 5 & 6 as a drop-off location if that's more convenient for you than bringing it to the meet. Jeanne Johnson will be putting it in her van, so BE SURE she knows where you have left your pop or water at the gym. Please put your name on whatever you bring.

TENTATIVE MEET SCHEDULE

If the meet fills, Fri. 1-9 p.m.; Sat. 9 a.m.-10 p.m.; Sun. 9 a.m.-9. We won't know definite session times until 10 days before the meet, and often we have changes after that, so 5 days before is more accurate.

HOTEL ROOMS

South judges need to let Cathy Peebles know what nights you will be staying by OCT.22 and she will make the hotel arrangements with Jeanne Johnson at a hotel near Midway airport (Fairfield Inn) that has free parking. North judges-Please let Betty Axelson-McClelland know what nights you need a room at the Fairfield Inn also by OCT. 22.***We greatly appreciate judges staying 3 to a room for the Judges' Cup Meet. Our IL NAWGJ paid out more in professional benefits than we had in the budget, so we need to watch expenses very carefully for this meet.

RATINGS AND EVENT ASSIGNMENTS

Since we still have 2 more tests being given, I will not have a final list of ratings until the end of the month, so event assignments cannot go out until I get those results. We will e-mail the meet judging and critique assignments at the very earliest moment since we realize you would all like to study for your events with the new routines and rules. Please be patient with the timing of this- SAINT SUE

BROSNAN has offered to help send it out again, and maybe the number of changes on event assignments will be minimal since it will be coming out very close to meet time.

CHANGES: Speaking of changes, I would like to ask each of you who signed up to please try not to change your availability for the days you signed up for unless it's really an emergency. Just one person canceling even one session can result in several other changes having to be made. We realize that you are volunteering for this meet, but IL has the most professional benefits in almost the entire NAWGJ, so please try to be there the days and sessions for which you have signed a contract.

JUDGES WHO WORK WITH GYMS -We really need your help encouraging teams to come to the meet. Many teams aren't coming because they say it's too early – but that's why our meet is so valuable! Please convince them to send kids so that they get the BENEFIT of the critique book and start the season off with a lot of helpful hints!!!THANKS for any help you can give in this area!!! It directly affects your professional benefits for the next year._____ And lastly,

***** A BIG THANKS TO ALL OF YOU GREAT JUDGES FOR HELPING WITH THE MEET!!!** If anyone has questions, please feel free to call or email me! Betty Axelson-McClelland



TSUK DU JOUR

- * Ask Betty A.-Mc. about her BIG surprise when she came home from the national course. She went to the gym only to discover that there was an ODD SMELL in the gym. She and co-workers met at the gym “armed and dangerous” only to find a DEAD skunk underneath a mat.
- * Shanie Keelean has a new address:
7447 S. Shore Dr. 18A
Chicago, IL 60649
(773) 619-5420
- * **WELCOME TO ILLINOIS** Kristin Boeck (from Iowa) L10 & Sarah Oberhauser (from Ohio) L9



New e-mail addresses:

JillRoberts@gmail.com
(Leuman)

Sarahelizabeth624@hotmail.com
(Sarah Oberhauser)

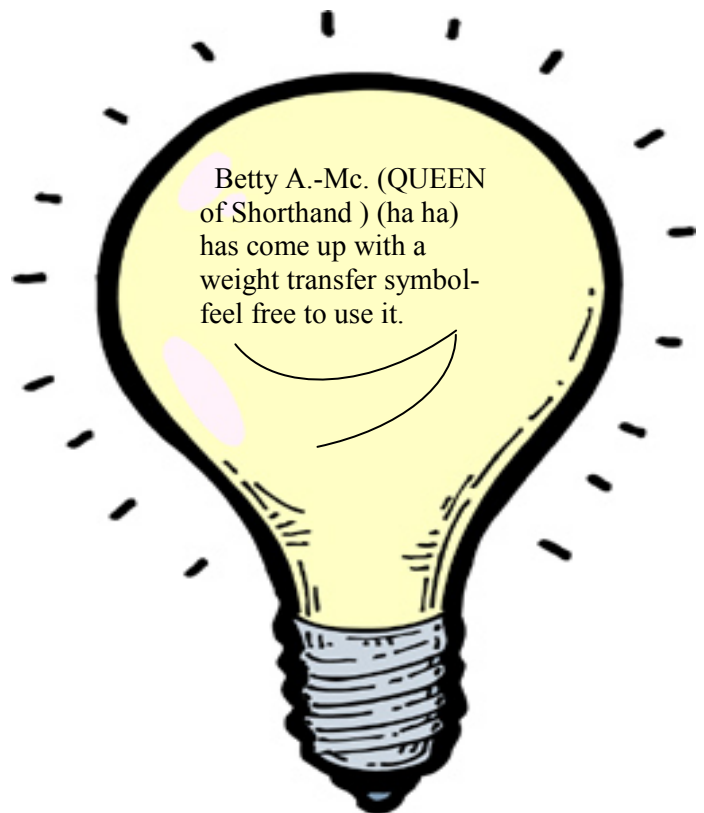
boecks@trvnet.net
(Kristin Boecks)

k2riske@aol.com
(Kristina Torisky's)

CONGRATULATIONS to our new higher rated judges in Illinois!

Level 5/6:	Level 9:
Paige Martin	Arika Hoyt
Cathy Huffman	Lynn Scheib
Natalie Koga	Mary Ann Sedlacek

Level 10:
Sharon Barbato
Debbie Pulley
Billie Stone
Amy Tritt



As I judged at a critique session today I just thought it would be good to discuss our first judging. We will soon be into the first meets and we all need to start on the same foot with being VERY WATCHFUL of mistakes being made. We need to KNOW the routines with arms, exactness and technique of elements and deduct when there are mistakes. Use the general deductions for exactness, artistry, rhythm, foot-body and posture, and dynamics. There will be a lot of incorrectness for awhile and it needs to be deducted to be fair to the girls really taking the time to do the connections and elements correctly. Take enough in amplitude and execution to differentiate in the ones doing turns on high toe, extending elements, holding going through vertical, straight arms, tight body and legs. Watch the turn out of feet, toe ball heel steps, and the supple arm movements. Floor even has the places where the head must spot on turns we need to catch. There is a lot to look for and the new routines have a lot of requirements for specific arm and body placements we need to see. I know we hate to “KILL” the kids with low scores but if we start by not deducting for the little things they will NOT work toward the perfection we are required to judge-”ideal model”.

Carole Liedtke
Every Day is Earth Day



COMPULSORY CLINIC

Let's start the year off on the same page – or at least in the same book! There will be a clinic for Levels 4, 5, and 6 with video reviews. The video routines will already have scores by a “master” panel to avoid confusion, but all opinions will be welcome.

The clinic will be at Itasca Park Dist. on Oct 16th from 11:00 to 1:00 or so. Please try to attend!!

HIGH SCHOOL CLINIC

If you are interested in judging high school gymnastics, there will be a class at Maine East High School beginning Oct. 18 and running for 5 weeks with one week each for general, vault, bars, beam, and floor. It will run from 7:00 – 9:00 and the cost is \$20. Even if you don't want to judge high school, it will be good for shorthand and execution practice and skill recognition.



A NOTE FROM SANDY OLDHAM:

Current updated memberships

I have only received 18 copies of credentials from judges who had submitted all membership cards that were currently renewed. I received copies of membership cards from judges that were dated 2003! I know this is a pain, but it must be done. If you do not have a membership card for USAG, you can go online to USAG and print a verification of your membership, and email it to sandy o.

NAWGJ membership cards are not as much of a problem, thanks to Cyndi Zimmerman, but if you do not have a current card please notify Betty Sroufe. I'm certain it will not cost you much!

The following judges need to send either updated USAG cards or NAWGJ cards:

Beth Miller	Ann Jacobson
Cathy Huffman	Christi Kerns
Debbie Hugelier	Natalie Koga
Linda Lowe	Judy Redmond

I know that most of you have renewed, and you are just waiting to receive your cards. This is just a friendly reminder that you still need to send them to Sandy O. Don't make me have to come after you! (Just kidding!).

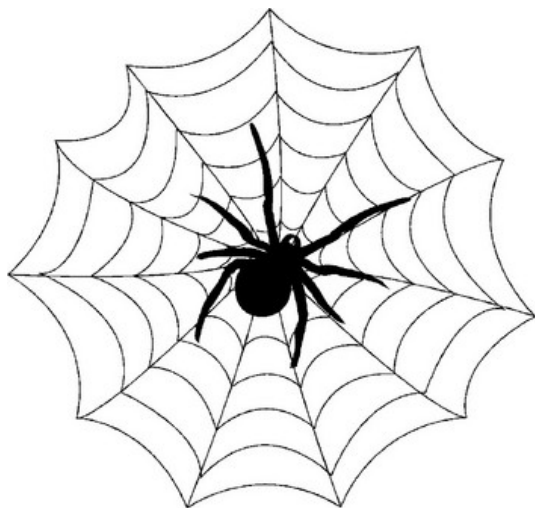
A whole lot of judges have NOT sent me anything. A few are prominent *board members*. Please get to it. I will be emailing you when your USAG membership is expiring, and reminding you to send me your new card. This will cost you less than what Betty will charge. Thank you for your cooperation in this matter.

PS: Deb Tritt was first to get her credentials in and Kathie Gehardt was second - way to go ladies!

Mary Kraus needs the following:

Dec. 3 & 4 Carbondale (3 Judges)

Feb. 25 & 26 Champaign (4 Judges)



Mary Lou needs the following:

Oct. 30th Davenport, IA (comp.) (3 Judges)
Level 5/6 or 7/8 judges are fine.

Dec. 5-8 Chicago PD (Peterson Park Gymnastics center) Level 2/3– report
Time will be 4:30 pm (start @ 5)
(approx. 1/1/2 to 2 hrs.)

Dec. 6-9 Chicago PD (Calumet Park gymnastics center) Level 2/3 - report
Time will be 4:30 pm (start @ 5)

Dec. 9 & 12 Chicago PD (Harrison Park Gymnastics center) Level 2/3
TBA

Dec. 28-30 (revised dates) Chicago PD
Sportsfest @ McCormick Place

BASKETS-BASKETS-WE NEED BASKETS!!!

Please everyone get together and donate a basket for the raffle at judges' cup. Two or three people get together and make up one. Possible themes are:

- *Harvest days
- *Spa
- *Birthday party
- *Holiday
- *Movie night
- *Pasta basket
- *Romantic evening
- *Wine basket
- *Card party night
- *Scrapbooking
- *Kitchen
- *Quilting/sewing
- *Baby basket
- *Coffee, tea, cocoa

*Make a list of what is inside the basket so we can attach it to the basket. Thanks for your help! L. Lowe

FROM THE ASSIGNOR:

Please make sure you return all your contracts to Mary Lou Ackman by email or US mail **ASAP!!!** All contracts have been sent out for the whole season except for IGI; some adjustments may have to be made after January 1, 2006 as testing will be over.

Mary Lou Ackman
1939 Butler Drive
Bartlett, IL 60103
mlouackman@yahoo.com



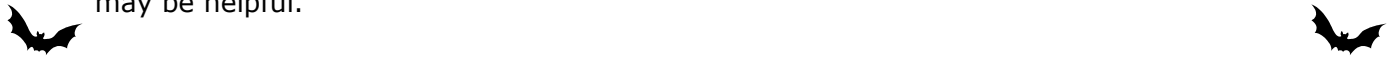


A NOTE FROM JEANNE:

This year there is a NCAA DVD. All judges that will judge College must watch the DVD. Ten copies have been mailed out. These copies will be returned to Jeanne or Hilary at the testing dates and also Judges cup. Please be sure to get your copy.



The following is a letter received from NAWGJ President Carole Ide. It addresses the college judging system. If you plan on judging college meets the following information may be helpful.



Dear Judging Directors,

Please send an email to your members that the college assigning will begin this week. A number of judges are having difficulty with entering the system once again. Please share the following reminders to assist them:

All pages must be completely filled out before moving to the next "page". Enter a zero (0) when appropriate rather than leave a blank. If the judge leaves a field blank it can kick them off the system or show the message..."this page cannot be displayed."

2. Do all pages in order. Do not go to specific dates of availability until the "General Availability" has been completed. The specific dates for each month must be checked. Once they have checked the date they need to go to "List Availability previously entered" and print out that page SO THEY HAVE A RECORD. THIS MUST BE UP-DATED IF THEY ACCEPT ANOTHER MEET AND THEY ARE NO LONGER AVAILABLE.

3. Finally, they must enter the number of meets desired each weekend. They do this by going to the "List Availability Previously Entered" page and clicking on the date they have indicated they are available, ENTER 1, 2, OR 3, however many meets they desire for that particular weekend. The reason is that some weekends they may wish to do only 1 meet, other weekends they may want 2 meets.

The complete Manual for the JAS for Judges is available on the NAWGJ.org website.

Best Regards,

Carole Ide



Judges Pics

Betsy Ellis, Jeanne Johnson, Billie Stone, and Debbie Pulley taking a break at Illinois State Congress.



Connie Maloney & Kara Ellis hard at work during Illinois State Congress.

Thanks to Kathy Elg for submitting the photos. If anyone has judging photos that they would like to submit for future newsletters please feel free to send them to Debbie Pulley.

More notes from Jeanne

The 2005 Judges Cup is around the corner. It is our only fundraiser and it is just one weekend a year. We need the support of all our members. Besides raising revenue it is the best way to start the season-seeing each other and judging the new routines!! Also, professional benefits can be used to pay judging related expenses from this past summer. Be sure to have receipts and send it on to Cyndi Zimmerman. Please read Betty's article.

Be sure to stay on top of testing. There are three remaining tests this year, see Dates to Remember. It is doubtful there will be more testing in Illinois until after the competitive season. Again, you must register on-line with USA Gymnastics.

STUDY, CLINIC, KNOW THE ROUTINES!!!

It is very important that you are prepared for this season. Attend the Compulsory Clinic on October 16th, get into a gym and study. We must be more than ready. Besides the compulsories we have new optional rules. There will be optional gymnast competing early as well. Be prepared.